

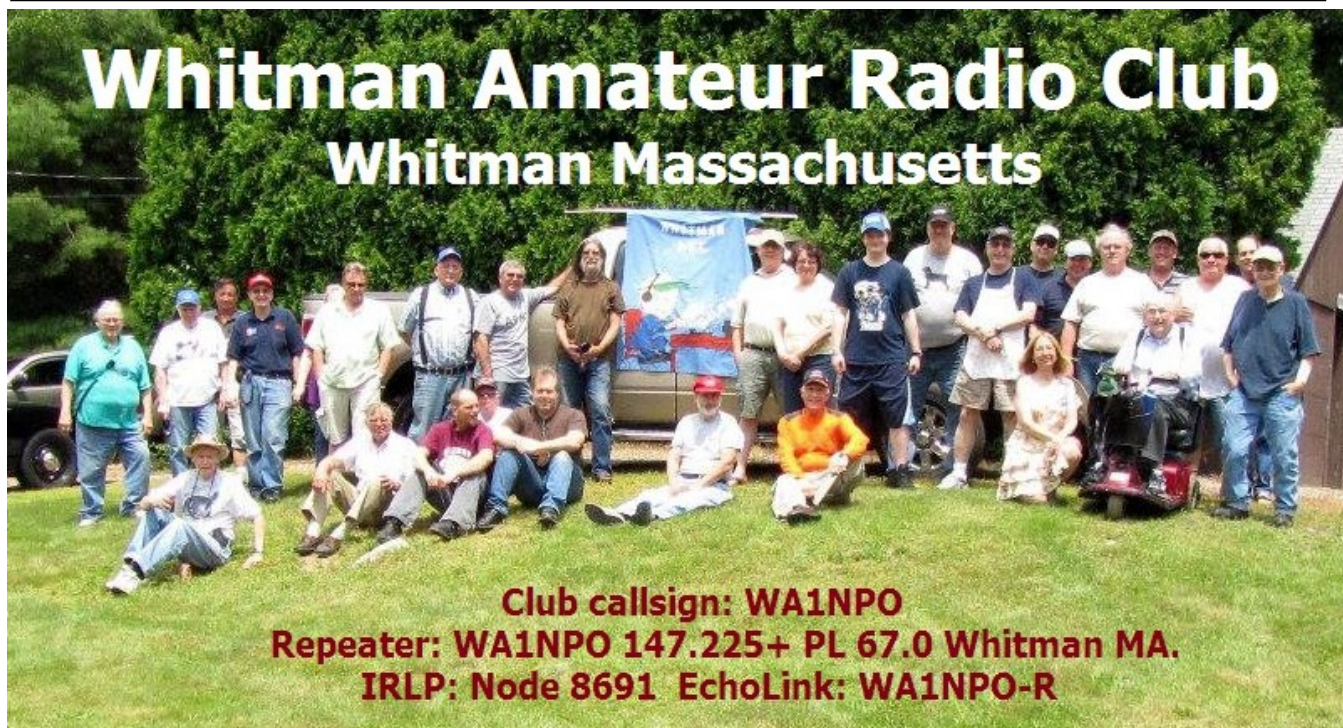


SPECTRUM

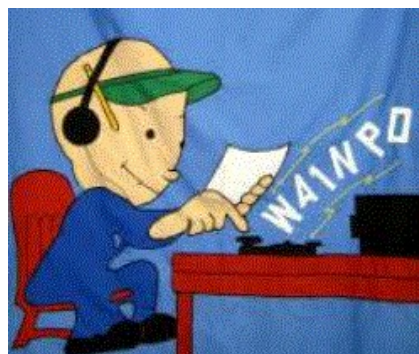


The Voice of the Humble Electron

Founded 1962



Some new club members attend the January meeting (L-R) **Scott KC1EUK, Kurt KC1EUJ, Matt W1AEM**



(Right) **Mike WA1MAD** congratulates **Matt W1AEM** after passing his General license test at **KIUSN** in Braintree in early January.

Whitman Amateur Radio Club Meeting 01/06/16



Paul Moss KB1MTW **Larry Kenney K1LJK** **Jeff Tracy N1SOM** **John Murphy WI1G**
V.President Secretary Treasurer President

Photo by Jeff WK1D

ATTENDANCE: 41 members and guests were present including 4 elected officers

KB1MTW Paul Moss
N1SOM Jeff Tracy
KB1IKH Elayne Tovet
WD1L John Nelson
W1OD Steve Cohn
KC1EFI Al McPhee
W1AEM Matthew Kane
KC1EUK Scott Mitchell
WG1L Jim O'Rourke
W1AXB Matt Paine
WA1YKF Warren Dickie
KC1EFJ Allen Hiltz
KB1OEP Mike Supple
KB1OEQ Ron Stundze

WI1G John Murphy
W1JGR John Ruppel
W1JT Jim Tovet
K1WGU Bob Bass
N1EZH Barry Kenney
WA1MAD Mike Davis
KC1EUJ Kurt Sundwall
KC1DWY John Ginsburg
N1OYH Carl Davis
KC1CNP W. Goodwin
K1UFO Billy Robinson
KC1ACF Mark Vess
KB1PFL Jim Madden
K1JMA Joe Amorelli

K1LJK Larry Kenney
KC1JET Jim Tynan
N1IQI Loren Pimentel
WK1D Jeff Ayres
AG1B Richard Metcalf
W1EKG Ross Hochstrasser
KB1MJL Elvin (Al) Marshall
KC1FZ George Davis
N1ZZN Jeff Lehmann
KA1KIJ Bob Azanow
SWL Marty Nugent
N1CFB Chris Babbett
WA1MWF Larry Leblanc

Secretary's Report:

President **John Murphy W11G** called the meeting to order at 7:00pm 01/06/16.
A quorum was present.

The Pledge of Allegence was recited, followed by an attendance roll call.

Treasurer **Jeff N1SOM** read the December 2015 treasurers report. Motion to accept the report as read made by **Ross W1EKG** with second by **Jeff WK1D**. Motion passed quorum vote. Jeff also reminded members of the 2016 dues payment coming due by the end of March. Jeff will take payment after this meeting and will be sending out reminders later in the month. Folks can also mail their dues payment into the club PO box:

Post Office Box 48
Whitman, MA 02382

Motion to accept the December 2016 secretary's notes as published on the clubs website made by **Jeff WK1D** with a second by **Barry N1EZH**. Motion passed quorum vote. **Jeff N1ZZN** also requested any new club members not receiving club emails, please stop by and see him. He'll get you on the email distribution list. New members should also see **Jeff N1SOM** to be sure they are on the member roster.

Health & Welfare report by **Elayne KB1IKH**:

Dish Garden to: The family of silent key,
Michael W1BBJ

Thoughts are with you card to: **Judy KB1SRO**

Jim W1JT further updated everyone on the latest health condition of **Judy KB1SRO**.



Net Control for January 2016


- January 10th : **Chris N1CFB**
- January 17th : **Jeff WK1D**
- January 24th : **Ross W1EKG**
- January 31st : **Mike WA1MAD**

Note: Mike WA1MAD has created large print, multi-page Net Control and Traffic reporting scripts for members to use when running the Sunday morning public service net. A copy of these documents appear later in this newsletter. These are also available in PDF format on our club website.

Old Business:

- **Ross W1EKG** made everyone aware that 9 new Technician class operators came from his recent training class held at the Whitman Police Station. Ross also pointed out several members were attending tonight's meeting. More are expected to join future meetings as the first year of club membership is free for class members. Ross also announced plans to start a General class training class at some point in the near future. Notification will be sent out and added to the club website once details have been confirmed. Ross also noted recent graduate **Kurt KC1EUJ** is starting a pre-General class study session.

New Business:

- **Ross W1EKG** announced **Mr. Mike W1RC** (NEAR-Fest former General Chairman) has graciously volunteered to fund 1/2 the cost of our recently purchased YAESU System Fusion repeater (\$250). Money was transferred to Treasurer **Jeff N1SOM** in December. **Big thanks** to Mr. Mike's for his generous club donation! It was suggested we send Mr. Mike a thank you note/card.
- 
- **Jim W1JT** provided a general operational report on System Fusion use of the Whitman repeater. Jim noted several club members are now using Fusion with very good results. Jim noted he's experienced clear communications from Boston/Storrow Drive to Rt3 South-exit 2.
 - **Jeff N1ZZN** provided a repeater update:
 - Verizon confirmed DSL service isn't available at the current (new) repeater site so moving the line to provide internet capability to the repeater isn't an option. Jeff cancelled the Verizon DSL service.
 - Jeff investigated "FreedomPop" a cellular wireless internet service with 500Mbytes/mo free. Cellular data service is required at \$4/mo for Sprint 3g service. This service provides a static IP needed for EchoLink and IRLP operations. Jeff borrowed a friend's setup and testing went well. To equip the repeater site, Jeff purchased the necessary router, FreedomPop dongle and cellular antenna from Ebay. If the 500Mbyte monthly limit is exceeded, \$10/Gigabyte is then charged. So far only a fraction of the 500Mbytes has been used so overages are not expected. EchoLink and IRLP are now restored using this system.
 - Jeff also added a Belkin 15A remote power switch for the Fusion repeater. This allows remote power cycling of the repeater if issues seen in the past where the repeater hangs are experienced again. The switch can be controlled from an App on a smart phone, allowing timely repeater resets.
 - Total expenditures of both the Belkin switch and FreedomPop internet equipment were: \$132.33. Motion to reimburse Jeff for the equipment costs made by **Steve W1OD** with a second by **Jeff KW1D**. Motion passed quorum vote.

- Jeff will locate EchoLink and IRLP instructions online and distribute the URL web addresses. This may help new folks who haven't used these system yet.
- **Paul KB1MTW** reminded everyone that with the new YAESU System Fusion repeater in place, a short delay is experienced when the repeater's carrier is first established. Paul suggests a 2 second count be done when opening the repeater before speaking. If the carrier is already transmitting (squelch tail has not yet dropped for example), there is no delay. In addition Paul suggests enabling Rx tone-squelch (aka Rx CTCSS or Tone Decode pl 67) on analog radios to avoid hearing Fusion digital transmissions.
- **Paul KB1MTW** informed the club members he has received a Christmas card from Jean, 'The Bruce' Bruce Heyden's sister intended for the club. Members are welcome to read the card after the meeting. Paul explained Jean and her husband are selling their home and moving to a 55+ community in Raynham for medical reasons.
- **Paul KB1MTW** reminded everyone of the potential Pine St. Improvement project and the need for plans/decisions to be made including antenna/tower options spoken about in the past (potential use of the 40' crank-up tower or **Bill N1FRE's** 60' tower for example and what antenna's should be installed). **Mark KC1ACF** offered suggestions on rebuilding the back furnace area of the quonsut hut. A general discussion took place on use or replacement of the existing furnace. **Billy K1UFO** indicated he's seen 38kbtu propane heaters available (for example) at Harbor Freight for approx \$240. **Paul KB1MTW** continued w/other suggestions on improving the interior of the quonsut hut.
- **Mark KC1ACF** updated the club members on the latest High St. Hanson potential club repeater location and tower use. Town authorization is still in the process of being finalized. Once approved, the building structure can be properly evaluated for structural soundness.
- **Jim W1JT** started a general discussion on methods to raise money for the club given the additional expenditures likely for the Pine St. Improvement project (currently: member dues for 2016, club Flea Markets, NEAR-Fest consignment equipment sales for example). Note to newer club members: the club will sell on consignment (typically 10%) members equipment at the NH NEAR-Fest events and club Flea Markets. This is an easy way for members to sell unused equipment and provide some funds back into the club treasury. Also fyi for new members, on occasion the club acquires (SK; silent key) equipment which is then sold (possibly on consignment) as well. If looking for equipment, check with **Paul KB1MTW**.
- **Jeff N1ZZN** reminded everyone to be thinking of ways help **Chris N1CFB** get more vendors for our spring and fall Flea Market events. Chris also confirmed the 2016 Flea Markets will be held on the Sunday and Monday of Memorial Day and Labor Day (May 29th/30th and Sept 4th/5th). **Ross W1EKG** suggests once

flyers are made, everyone print out several and distribute them. **Paul KB1MTW** reminded us that **Bill N1FRE** will post the flyer in his car window.

- **Paul KB1MTW** raised the idea of contacting the E Bridgewater YMCA now for use of their field for the 2016 ARRL Field Day event taking place on May 25th and 26th. **Ross W1EKG** started a general discussion on methods to bring the public to our field day event. **Jeff N1ZZN** suggested a listing in the Whitman Express newspaper. **Paul KB1MTW** suggests putting the large club sign in front of the YMCA near the street to attract the public. **Mike WA1MAD** asked if possibly the WATD radio station could cover the event? **Jeff N1ZZN** thought they might come to the site and interview folks. **Paul KB1MTW** has a possible contact at WATD. **Mark KC1ACF** suggests cheerleaders be assembled at our Field Day event. **Billy K1UFO** suggests bright arrow signs be placed along several roadways guiding folks to our events.
- **Jim W1JT** offered to donate 15% of the proceeds of his upcoming book sale to the club and asks members to share the sale details on Facebook.
- **Joe K1JMA** suggested we hold local car wash to generate club \$\$.
- **Jeff N1ZZN** asked if a thank you letter could be sent to Plimoth Plantation management for use of their facilities over Thanksgiving weekend? **Joe K1JMA** indicated he will be providing this along with a framed event certificate.

Motion to adjourn the meeting made by **Mark KC1ACF** with a second by **Joe K1JMA**. Motion passed quorum vote.

John W1IG adjourned the meeting at 7:42 pm, 01/06/16

End Secretary's Report

Judy Attaya-Harris KB1SRO Silent Key (SK)



Judy Ann Attaya-Harris passed away January 21, 2016 after a valiant and lengthy battle with cancer. She was born in Plymouth, August 5, 1949, to Arthur B. and Helen F. Attaya. She attended elementary school in Hingham, graduated Scituate High School and earned her RN from Newton-Wellesley Hospital School of Nursing.

Judy's career in nursing spanned over thirty years, working at several Boston area hospitals, primarily at Spaulding Hospital and later at New England Medical Center in Boston. Her strong faith, which guided and comforted her throughout her life, led her to do pastoral care work in the community and be actively involved at the three parish churches in Plymouth.

She will be remembered fondly by many ham radio operators for her enthusiasm and involvement as a member and vice president of the Genesis Amateur Radio Society and member of the Whitman Radio Club. She also was involved with the Boy Scouts as an instructor and volunteer. Judy is survived by her son, Sean W. Harris; and grandson, Anthony Attaya Harris; and was sister to Margo Attaya (Arne Sturm), Arthur B. Attaya Jr. (Tracy) and Helen M. Small (Russell); and aunt to Arthur, Jack, Natalie and Mark Attaya and Alexandra Sturm. She is also survived by partner John Wittey; and his daughters, Esther Schifano, Chrissy Nelson and Stephanie Wittey; and many cousins and dear friends.

Funeral arrangements will be under the care of the Bartlett Funeral Home, 338 Court Street, Plymouth. Calling hours will be on Friday, January 29, 2016, from 4-7 p.m. at the funeral home. A funeral Mass will be held Saturday, January 30, at 10 a.m. Interment will be private. In lieu of flowers, contributions may be made in her memory to Ovarian Cancer Research Fund (ocrf.org) or Dana-Farber Cancer Institute (Ovarian) or a charity of your choice .





2016 event dates

- Marlborough Flea Market: 9am-1pm Sat Feb 13th
 - <http://www.qsl.net/n1em/>
- Framingham Flea Market: 9am Sun April 10th
 - <http://www.w1fy.org/flea.aspx>
- W1BSA USS Massachusetts operations, Sat April 23, 0900-1600
- NEAR-Fest: Fri & Sat April 29th & 30th
 - <http://www.near-fest.com:8084/nearfest/>
- Dayton Hamvention : Fri-Sun May 20th-22nd <http://hamvention.org/>
- WARC Memorial Day Flea Market Sun & Mon, May 29th & 30th.
- ARRL Field Day: Sat & Sun June 25th & 26th
 - <http://www.arrl.org/field-day> (2016 update pending)
- MIT Sunday Flea Markets & CranLand breakfast Fly-ins:
 - <http://w1mx.mit.edu/flea-at-mit>
 - <http://www.eaa279.org/index.htm>
(2016 update pending)
 - April 17th, May 15th, June 19th, July 17th,
 - Aug 21st, Sept 18th, Oct 16th.
- Marshfield Fair: Fri Aug 19th- Sun 28th
 - (station setup Thur Aug 18th, station breakdown Mon Aug 29th)
 - <http://www.marshfieldfair.org/>
- ARRL New England/Boxboro Convention. **NEW DATE:** Fri-Sun September 9th-11th (same location: Holiday Inn)
 - <http://www.boxboro.org/2016/index.html>
- WARC Labor Day Flea Market Sun & Mon Sept 4th & 5th.
- NEAR-Fest: Fri & Sat October 14th & 15th
 - <http://www.near-fest.com:8084/nearfest/>
- Plimoth Plantation Special Event Fri-Sun Oct 25th, 26th, 27th.

SCTV available on Youtube

by Mike WA1MAD

Scituate Community TV runs a show called "I Always Wanted To Do That" co-hosted by **Mike WA1MAD**.

Per Mike, "...if you go to YouTube and enter, 'SCTV I always wanted to do that', you'll see a selection of the many episodes of our fun and informative project.."



Mike WA1MAD interviews local amateur radio operator **Bob Callahan W1QWT (aka "Q")** in his shack.

Link to the "Q" interview:

https://www.youtube.com/watch?v=rHfDVIaiTko&index=25&list=PLWgaM9DsDkTIPuU_vhrsClwDkbFBcgB4J

Link to the general playlist for 'I Always Wanted To Do That' shows:

https://www.youtube.com/playlist?list=PLWgaM9DsDkTIPuU_vhrsClwDkbFBcgB4J

Mike WA1MAD has created an easy to read, large font, multi-page version of the Whitman Amateur Radio Public Service net scripts used for net control and NTS traffic creation. Each is a PDF file on the club website. The net control script can be found at : http://www.wa1npo.org/WA1NPONet_LargeFont.pdf

◁WHITMAN AMATEUR RADIO PUBLIC SERVICE NET ▷

NET OPENING: ***"IS THERE ANY OTHER BUSINESS FOR THE REPEATER BEFORE WE BEGIN THIS WEEK'S WHITMAN AMATEUR RADIO PUBLIC SERVICE NET ?"***

"THIS IS, [CALL SIGN _____, NAME _____] CALLING THE WHITMAN AMATEUR RADIO PUBLIC SERVICE NET... THIS NET OPERATES EVERY SUNDAY MORNING AT 08:30 HOURS ON THIS FREQUENCY, 147.225 MHz."

"THE PURPOSE OF THIS NET IS ESTABLISH A 2 METER FREQUENCY IN THE EVENT OF AN EMERGENCY, AND TO SHARE INFORMATION OF INTEREST WITH AMATEURS AND ALL OTHER LISTENERS AS WELL..."

"ALL STATIONS WISHING TO JOIN, PLEASE DO SO, BY KEYING FOR 2-3 SECONDS TO ALLOW THE REPEATER TO RECOGNIZE YOUR SIGNAL, THEN SAYING SLOWLY "THIS IS"... UN-KEY AND PAUSE 3 SECONDS TO CHECK FOR DOUBLING AND GIVING ANYONE WITH AN IMMEDIATE OR URGENT NEED TO USE THE REPEATER, A CHANCE TO BE HEARD. THEN GIVE YOUR CALL SIGN, YOUR NAME, AND YOUR LOCATION AND WHETHER YOU HAVE TRAFFIC OR NO TRAFFIC."

***"THIS IS...(PAUSE)
[Call sign _____, Name _____] NET CONTROL STATION FOR THIS WAINPO REPEATER, NOW CALLING FOR STATIONS TO JOIN THIS NET WITH OR WITHOUT TRAFFIC.... OVER."***

NOTE: AFTER THE 1 ST CALL-UP ASK - "If you can take this morning's message at the end of the net, please let me know at the beginning of your turn to comment."

NET CLOSING: "THIS HAS BEEN A REGULAR SESSION OF THE WHITMAN AMATEUR RADIO CLUB PUBLIC SERVICE NET.. WE MEET EVERY SUNDAY MORNING AT 08:30 hrs., ON THIS REPEATER FREQUENCY OF 147.225 MHz... WE THANK EVERYONE FOR THEIR PARTICIPATION AND ASSISTANCE IN THE NET TODAY, AND TO THOSE WHO STOOD BY, KEEPING THE FREQUENCY CLEAR THE NEXT SESSION OF THIS WAINPO NET WILL BE NEXT SUNDAY MORNING AT 08:30 hrs. THIS IS WA1MAD, NOW CLOSING THE NET AT [time] hrs. WISHING EVERYONE A PLEASANT GOOD MORNING, HAPPY NEW YEAR, AND TURNING THIS REPEATER OVER TO ALL REGULAR AMATEUR USE."

Mike's easy to read NTS traffic script can be found at:
http://www.wa1npo.org/WA1NPONet_Traffic_LargeFont.pdf

1. Preamble = top line of message <> START BELOW <>

Please copy message numbers (a.) [1&2](ex:1 & 2)
(b.)Routine, (d) [Call Sign] , (e.) Check of Eleven, (number of words in the text) (f.) [Your Location] (g.) Time filed optional, (h.) [Today's Date]

2. Address <> CONTINUE TO SAY THE FOLLOWING <>
MESSAGE NO. 1 going to: NIIQI or _____
MESSAGE NO. 2. going to: KWIU

3. Text as follows, I spell, Whiskey, Alpha, Romeo, Pa Pa, Sierra, November (WARPSN) Traffic, Report, Sunday, [Month], figure [Date]

QNI, figure [number of check-ins _____] (ex: two one),
QTC, figure two, 73

4. [NAME _____, CALL SIGN _____], END,..... no more.

<> NET CONTROL OPERATOR <> S.O.P. <>

1. List check-in's by call sign, name, & location

2. Have those with traffic, list their traffic FIRST

3. Call on any mobile stations SECOND, then call on all others.

REPORTING THE WARC NET MESSAGE OVER THE AIR

QNI <> is the total number of stations checking in--counting net control as no.1 on the log sheet etc.

QTC <> is the number of messages passed for that session.

Note: say the **Underlined** words. [italics text] replace with this weeks specific details (ex: your call sign)

WARC Net Message General Reporting Format NUMBER
PRECEDENCE STA. ORIGIN CHECK PLACE-ORIGIN
TIME DATE 1, 2 ___R___ NC's call ___11___ WHITMAN
optional JAN 1 TO: _____ KWIU _____

WARPSN TRAFFIC REPORT SUNDAY
JANUARY ONE QNI 21 QTC 2 . 73 . SIGNATURE <> print
YOUR NAME & CALL SAY <> END NO MORE

Log - sheet note worthy information <> Our net opening and closing as well as the log sheet with the session's message, Included at the bottom of the page, is basically a simple guide that conforms to the accepted ARRL standard and is a good general guide. Anyone seeking more formal and extensive information can inquire through the ARRL or an experienced traffic handler.

QNI <> is the total number of stations checking in--counting net control as no.1 on the log sheet etc.

QTC <> is the number of messages passed for that session. As per the ARRL procedure, each net control station operator, when keeping a log of net check-in's and messages, shall start each January 1st, with message number 1 No two messages for that year shall be assigned the same number. The reason is to be able to identify and recall, if necessary, a particular message, at any future time. Although, it is unlikely that our informal messages would be recalled for any reason.

Thanks go to **Mike WA1MAD** for putting these new versions together. It's hoped more volunteers will come forward and try net control operations using either these new or the original scripts.

The original Net Control and NTS Traffic script, created by **Bill N1FRE**, is still available on the club website at: <http://www.wa1npo.org/WARPSN.pdf>

This version has the net control and NTS traffic elements on a single page. Also included is a log sheet used by the Net Control operator to record check-ins.

WHITMAN AMATEUR RADIO PUBLIC SERVICE NET

NET OPENING: IS THERE ANY OTHER BUSINESS FOR THE REPEATER BEFORE WE BEGIN THIS WEEK'S WHITMAN AMATEUR RADIO PUBLIC SERVICE NET? <nothing heard>

THIS IS [CALL SIGN, NAME] - CALLING THE WHITMAN AMATEUR RADIO PUBLIC SERVICE NET. THIS NET OPERATES EVERY SUNDAY MORNING AT 08:30 HRS. ON THIS FREQUENCY, 147.225 MHz.

THE PURPOSE OF THIS NET IS ESTABLISH A 2 METER FREQUENCY IN THE EVENT OF AN EMERGENCY, AND TO SHARE INFORMATION OF INTEREST WITH AMATEURS AND ALL OTHER LISTENERS AS WELL.

ALL STATIONS WISHING TO JOIN, PLEASE DO SO, BY SAYING, SLOWLY, 'THIS IS', UNKEY AND PAUSE 3 SECONDS TO CHECK FOR DOUBLING AND GIVE ANYONE WITH AN IMMEDIATE OR URGENT NEED TO USE THE REPEATER, A CHANCE TO BE HEARD. THEN GIVE YOUR CALL SIGN, YOUR NAME, AND YOUR LOCATION, AND WHETHER YOU HAVE TRAFFIC OR NO TRAFFIC.

THIS IS [CALL SIGN, NAME] NET CONTROL STATION FOR THIS WA1NPO REPEATER NOW CALLING FOR STATIONS TO JOIN THIS NET WITH OR WITHOUT TRAFFIC. OVER.

NOTE: AFTER THE 1st CALL-UP ASK - "If you can take this morning's message at the end of the net, please let me know at the beginning of your turn to comment.

NET CLOSING: THIS HAS BEEN A REGULAR SESSION OF THE WHITMAN AMATEUR RADIO CLUB PUBLIC SERVICE NET. WE MEET EVERY SUNDAY MORNING AT 08:30 HRS., ON THIS REPEATER FREQUENCY OF 147.225 MHz.

WE THANK EVERYONE FOR THEIR PARTICIPATION AND ASSISTANCE IN THE NET TODAY, AND THOSE WHO STOOD BY KEEPING THE FREQUENCY CLEAR. THE NEXT SESSION OF THIS WA1NPO NET WILL BE NEXT SUNDAY MORNING AT 08:30 HRS.

THIS IS [CALL SIGN], NOW CLOSING THE NET AT [time] HRS. WISHING EVERYONE A PLEASANT GOOD MORNING AND TURNING THIS REPEATER OVER TO ALL REGULAR AMATEUR USE.

<> NET CONTROL OPERATOR <> S.O.P.

- List check-in's by call sign, name, & location.
- Have those with traffic, list their traffic FIRST.

3. Call on any mobile stations SECOND, then call on all others.

REPORTING THE WARC NET MESSAGE OVER THE AIR

QNI <= is the total number of stations checking in--counting net control as no. 1 on the log sheet etc.

QTC <= is the number of messages passed for that session.

Note: say the Underlined words. [*italics text*] replace with this weeks specific details (ex: your call sign)

- Preamble = top line of message <= START BELOW <= Please copy message numbers (a.) [n & n+1] (ex: 1 & 2) (b.) Routine. (d.) Station of origin [Your Call Sign]. (e.) Check of Eleven. (number of words in the text) (f.) [Your Location] (ex: Whitman, MA) (g.) Time filed optional, (h.) [Month, date] (ex: January one four)
- Address <= CONTINUE TO SAY THE FOLLOWING <= MESSAGE NO. 1 going to: [club recipient] (ex: N1IQI), MESSAGE NO. 2. going to: KW1U
- Text as follows, I spell, Whiskey, Alpha, Romeo, Pa Pa, Sierra, November (WARPSN) Traffic, Report, Sunday, [Month], figure [Date] (ex: one) QNI, figure [number of check-ins] (ex: two one), QTC, figure two, 73
- Signature <= [your name, Call Sign]. END, no more

WARC Net Message General Reporting Format

NUMBER	PRECEDENCE	STA ORIGIN	CHECK	PLACE-ORIGIN	TIME	DATE
1, 2	R	NO's call	-11-	WHITMAN optional		JAN 1
TO: <u>KW1U</u>						
<u>WARPSN</u>	<u>TRAFFIC</u>	<u>REPORT</u>	<u>SUNDAY</u>	<u>JANUARY</u>		
<u>ONE</u>	<u>QNI</u>	<u>21</u>	<u>QTC</u>	<u>2</u>		
<u>73</u>						

SIGNATURE <= print YOUR NAME & CALL SAY <= END NO MORE

Previous Sta. log no.'s > _____ NET CONTROL LOG Sta. log no.'s today > _____

GROUP: WARPSN WX _____ TEMP _____ WIND _____ HUM _____ BAROM _____

DATE: _____ LOCAL TIME: OPEN- _____ CLOSE- _____ QNI: _____ QTC: _____

QNI	CALL SIGN	NAME	LOCATION	TRAFFIC	COMMENTS
NCS					
2					
3					
4					
5					
6					
7					
8					
9					
10					
11					
12					
13					
14					
15					
16					
17					
18					
19					
20					
21					
22					
23					
24					
25					
26					
27					

To further help all those who run the net, **Paul KB1MTW** noticed a helpful article in a recent ARRL ARES newsletter and asked it be included here in our newsletter:



Tips for Beginning Net Control Operators

Here in northwest Ohio, we have acquired many new hams and encourage them to operate as net control station (NCS) for various routine nets to gain them experience, providing us with a pool of competent net controllers in the event of an emergency/disaster. Here are some of the basic tips we convey to our novice net control stations for a smoothly running net:

- Get a glass of water or something to drink.
- Make yourself comfortable. Sit in a good location with plenty of room on a desk or table to write.
- Have a good writing instrument and a back-up along with an extra piece of paper in case you need to jot down notes.
- Take your time; go at your own pace. Remember, you are in control of the net and the frequency.
- Don't worry about making mistakes; there are no mistakes to be made.
- To handle the crowd that is trying to check in, you will develop your own way.
- Stop stations from checking in ("Let's hold it for a minute") until you are caught up.
- Weak stations and stations who give their call signs too fast, are always a problem -- skip them at first. Go back later for repeats.
- Write your log as you see fit. You are the one that has to read it.
- Headphones are a good idea -- they help you focus on what you are hearing and help keep you from getting distracted.

As I mentioned before, there are no mistakes, only experience. When you've finished the net that is what you will have. -- **Steve Bellner, W8TER**, Maumee, Ohio

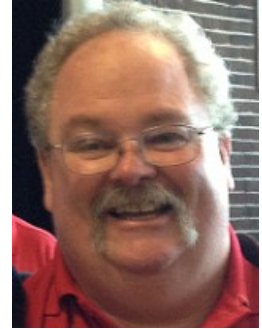
Special Event announced

by Rick KB1TEE

W1BSA

April 23, 2016 0900-1600

Please come out and help us operate from the ship. Last year we had a grand time. Hoping for more operators to come out and participate this year.



Contact Rick KB1TEE: please email so I will not forget you kb1tee@gmail.com

USS Massachusetts operations 2015



Last year's set up team we went to the ship on Friday morning to set up the antennas
Lee N1ALL, Bill NR1FD, Rick KB1TEE, Bob N1EDM also not pictured is Shawn Grajales SWL



Saturday operations in the Wardroom **Billy K1UFO, Fred KC1ACG and Mike WA1MAD**

In the back ground **John N1UMJ**

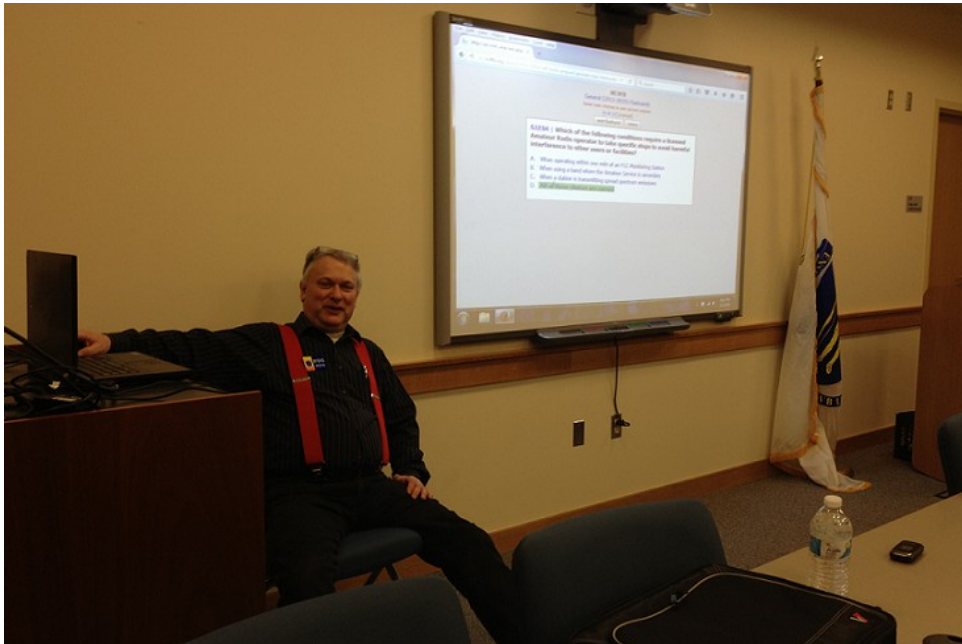
If you wish to assist us I will need to make an ID card for you so please contact me at least 10 days before this event

Thank you Rick KB1TEE

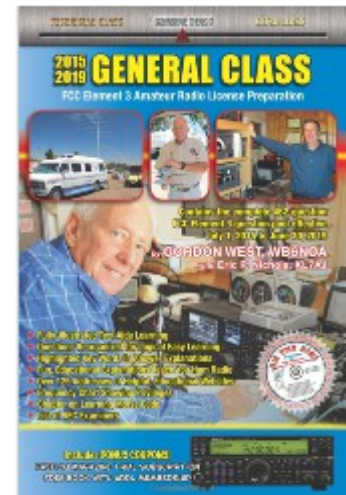
General Amateur Radio Class

by Ross W1EKG

Ross W1EKG has started a General Amateur Radio training class, meeting Tuesday nights, 7-9pm at the Whitman Police Station.



Above: **Ross W1EKG** leading the class through the General question pool practice test. Ross alternates between the practice test flashcards and the Gordon West General Class book. A big THANKS to Ross for running the class!



Below, a very good turn out for the class. This Whitman Police Station training room offers a great learning experience for all.



HAM RADIO LOCAL AREA NETS

If you know of a Ham Radio Local Area Net that is not listed here, a typo on the information, or a Net listed which is no longer active, please contact Barry – N1EZH at: N1EZH@comcast.net, so this list can be updated. All Frequencies are in MHz and 6 Meters (50.0 MHz and up.), are FM Mode unless otherwise noted. Thanks!



- Sunday:** **WA1NPO – WARPSN Net, 8:30 AM, Whitman ARC Rptr, 147.225 +, PL 67.0**
6 Mtr AM Net, 5:00 PM, 50.400.0 AM, Scituate
Pilgrim Amateur Wireless Assoc. 10 Meter Net, 7:30 PM, 28.375.0 USB
Cape & Island Traffic Net, Every Night at 7:30 PM, Falmouth N1YHS Rptr, 147.375 + PL 110.9
Genesis ARC CW Training Net, 7:00 PM, Plymouth N1ZIZ Rptr, 146.685 – PL 82.5
Eastern MA 2 Mtr Traffic Net, Every Night at 8:00 PM, Boston W1BOS Rptr, 145.230 – PL 88.5
Norfolk County Radio Association Net, 8:00 PM, Walpole Rptr, 146.895 – PL 123.0
- Monday:** **Cape and Islands Weather Net, 6:00 AM, Mon – Sat, Dennis K1PBO Rptr, 146.955 – PL 88.5**
Fairhaven Weather Net, 8:00 PM, SEMARA Rptr, 147.000 + PL 67.0
Norfolk County Emergency Preparedness Net, 8:00 PM, Walpole Rptr, 146.895 – PL 123.0
Falmouth ARA Net, 8:30 PM, Falmouth K1RK Rptr, 146.655 – PL 88.5
Boston ARC Rag Chew Net, 9:00 PM, Boston W1BOS Rptr, 145.230 – PL 88.5
- Tuesday:** **Massasoit ARA Net, 8:00 PM, Bridgewater W1MV Rptr, 147.180 + PL 67.0**
(Except 3rd Tue!)
Genesis ARC 2 Mtr Rag-Chew Net, 7:30 PM, Plymouth N1ZIZ Rptr, 146.685 – PL 82.5
Fairhaven Weather Net, 8:00 PM, SEMARA Rptr, 147.000 + PL 67.0
Norwood Amateur Radio Club Net, 8:00 PM, Norwood Rptr, 147.210 + PL 100.0
220 MHz Day! Try to find a 220 Repeater near you and give a call out!
- Wednesday:** **Taunton ACG, KC1TAC, 2 Mtr Simplex Net, 8:30 PM, 145.770**
Whitman ARC 10 Meter Rag-Chew Net, 8:00 PM, 28.333.0 USB
Blackstone Valley ARC , 2 Mtr Simplex Net, 7:00 PM, 146.565
Fairhaven Weather Net, 8:00 PM, SEMARA Rptr, 147.000 + PL 67.0
Cape and Islands ARES Net, 8:00 PM, Dennis K1PBO Rptr, 146.955 – PL 88.5
Waltham Wranglers Swap Net. 9:00 PM, Waltham W1MHL Rptr , 146.64 – PL 136.5

Thursday: Fairhaven Weather Net, 8:00 PM, SEMARA Rptr, 147.000 + PL 67.0
Genesis ARC CW Training Net, 7:00 PM, Plymouth N1ZIZ Rptr, 146.685 – PL 82.5
10 Mtr General Class Rag-Chew Net, 8:00 PM, 29.470.0 FM
Sturdy Mem. Hosp. ARC ARES Practice Net, 8:30 PM, K1SMH Rptr, 147.195 + PL 127.3
900 MHz Day! Try to find a 900 Repeater near you and give a call out!

Friday: Fairhaven Weather Net, 8:00 PM, SEMARA Rptr, 147.000 + PL 67.0

Saturday: **South Shore Skywarn Net, 8:00 PM, Bridgewater W1MV Rptr, 147.180 + PL 67.0**

***VKEMCOMM* Echolink Conference node: 270177/IRLP 9508**

(due to *WX-TALK* Echolink conference node: 7203/IRLP 9219 outage)

Refer to: <http://www.voipwx.net/>

WHITMAN AMATEUR RADIO PUBLIC SERVICE NET (WARPSN)

The **WARPSN** NET meets every Sunday morning at 8:30 a.m. on the Whitman REPEATER 147.225 MHz (PL 67). Come join in and share your amateur radio related activities with the other area HAMS and short-wave listeners as well. We need your updates for the newsletter.

As part of our training, we encourage everyone to practice sending routine RADIOGRAM messages. Make up a National Traffic System (NTS) traffic message and send it to a friend. We also encourage everyone to try your hand at Net Control. Contact **Bill N1FRE** for a Net Control handout.



MEETING SCHEDULE

Meetings are held on the first
Wednesday of each month

The next meeting will be held at the
Whitman Knights of Columbus, which is
located at 1195 Bedford Street
(Rt. 18) in Whitman, Mass.

NEXT MEETING

Wednesday, Feb 3rd at 7:00 p.m.
Whitman Knights of Columbus

NEXT OTA/Repeater MEETING

Wednesday, Feb 17th at 7:00 p.m.
on the Whitman 147.225 repeater

Club REPEATER 147.225 MHz PL 67

Club IRLP Node 8691

Club EchoLink: WA1NPO-R Whitman MA USA

Club EchoLink Node 484193

CLUB OFFICERS

<u>President</u>	<u>John Murphy</u>	<u>W1IG</u>
<u>V. President</u>	<u>Paul Moss</u>	<u>KB1MTW</u>
<u>Secretary</u>	<u>Larry Kenney</u>	<u>K1LJK</u>
<u>Treasurer</u>	<u>Jeff Tracy</u>	<u>N1SOM</u>
<u>Director</u>	<u>John Nelson</u>	<u>WD1L</u>
<u>Director</u>	<u>Ron Stundze</u>	<u>KB1OEO</u>
<u>Director</u>	<u>Jeff Lehmann</u>	<u>N1ZZN</u>
<u>Director/</u>		
<u>Past President</u>	<u>Jim Tovet</u>	<u>W1JT</u>
<u>Health/Welfare</u>	<u>Elayne Tovet</u>	<u>KBIKH</u>

Web Master: Jeff Lehmann N1ZZN

E-Mail: n1zzn@comcast.net

Web Site: <http://www.wa1npo.org>

Training Coordinator

Ross Hochstrasser W1EKG

E-Mail: bavarianradio@comcast.net

Club House / Equipment Coordinator

Paul Moss KB1MTW

E-Mail: pm.moss@comcast.net

Newsletter Editor

Larry Kenney K1LJK

Email: LJK320@netscape.net



WHITMAN AMATEUR RADIO CLUB, INC.
A Non-Profit Corporation Serving the Public in Time of Emergency



Post Office Box 48
Whitman, MA 02382
ARRL Club #0082
Club Call Sign: WA1NPO

