



The Whitman Amateur Radio Club, Inc.

July 2007

# SPECTRUM



The Voice of the Humble Electron

Founded 1962

## FIELD DAY 2007 -- SPECIAL ISSUE

Field Day 2007 was a great success with 25 Whitman Club members and 1 area HAM operating from **Paul Burbine's N1VTI** home QTH. The Field Day participants helped set up two Base Stations in tents in **Paul's N1VTI** back yard, two Base Stations in Campers in **Paul's N1VTI** front yard and two Base Stations in **Paul's N1VTI** garage. The Field Day team made 411 contacts with amateur radio operators in 29 States and 3 Canadian Provinces. There were 7 Whitman club members staying overnight.

## THE SATURDAY MORNING FIELD DAY SET-UP CREW



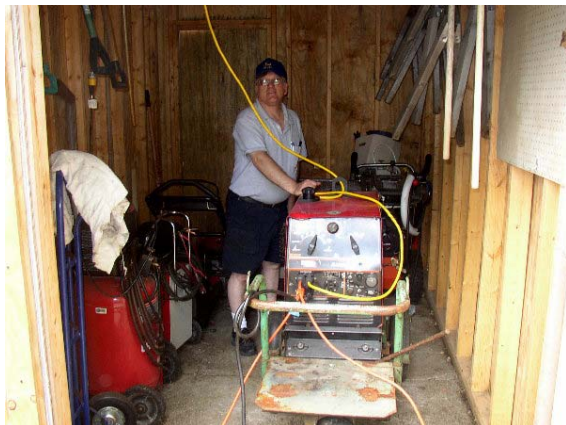
The weather was beautiful all weekend with the temperatures in the 70's and a nice breeze. The Saturday morning Field Day crew arrived at 9 a.m. to set up tents and antennas. Just before noon the crew was rounded up for a photo shoot. Shown standing L. to R. are **Bruce Hayden N1IX**, **Dave Gurney WA1YZH**, **Jeff Lehmann N1ZZN**, **Roy Logan KB1CYV**, **Bill Tracy N1SON**, **Sam Webber N1WIG**, **Mike Supple KB1OEP**, **Ray Bolduc KB1ODU**, **Jim O'Rourke WG1L**, **Jeff Tracy N1SOM**, **Jim Ford NM1F** and **Bill Hayden N1FRE**. Shown seated L. to R. are **Paul Burbine N1VTI** and **Paul Moss KB1MTW**.

## THE LOCATION WAS NEW THIS YEAR

With the lack of restroom facilities at Ames Nowell State Park the only objection heard at the meeting - it was decided to accept **Paul Burbine's N1VTI** invitation to operate Field Day 2007 from his home QTH in East Bridgewater this year.



There were three campers parked overnight in the front yard and two screen tents set up overnight in the back yard. There were cars everywhere. **Paul's N1VTI** back and side yard had plenty of trees and room for extra antennas. For emergency power, **Jim Wolf's N1JCW** 8000 watt Lincoln generator / welder was positioned in **Paul's N1VTI** shed to keep the noise down.



**Paul Burbine N1VTI  
fires up the emergency generator**



**Mike Supple KB1OEP and  
Paul Moss KB1MTW set up a screen tent**

**THE PARTICIPATION WAS TERRIFIC:** The 25 Whitman Club members and 1 area HAM who were able to make it to the Field Day Site included.

<b>N1VTI</b>	<b>Paul Burbine</b>	<b>KB1CYV</b>	<b>Roy Logan</b>	<b>NM1F</b>	<b>Jim Ford</b>
<b>N1SOM</b>	<b>Jeff Tracy</b>	<b>N1ZZN</b>	<b>Jeff Lehmann</b>	<b>N1SON</b>	<b>Bill Tracy</b>
<b>WG1L</b>	<b>Jim O'Rourke</b>	<b>N1X</b>	<b>Bruce Hayden</b>	<b>KB1MTW</b>	<b>Paul Moss</b>
<b>KB1OEP</b>	<b>Mike Supple</b>	<b>N1FRE</b>	<b>Bill Hayden</b>	<b>WA1YZH</b>	<b>Dave Gurney</b>
<b>KB1ODU</b>	<b>Ray Bolduc</b>	<b>N1NTZ</b>	<b>Ed Meehan</b>	<b>N1OGP</b>	<b>Frank Hayes</b>
<b>KB1NPH</b>	<b>Bill Anstead</b>	<b>N1PXX</b>	<b>Ron Smith</b>	<b>KA1PJX</b>	<b>Don Keene</b>
<b>KB1OAU</b>	<b>Alice Carlson</b>	<b>N1POO</b>	<b>Pete Carlson</b>	<b>K1VU</b>	<b>Bob Johnson</b>
<b>W1NYC</b>	<b>Bill O'Hara Jr.</b>	<b>KB1OEJ</b>	<b>Sam Vernon</b>	<b>KB1ODS</b>	<b>John Chase</b>
<b>W1SM</b>	<b>Al Drollett Jr.</b>	<b>KB1OEO</b>	<b>Ross Hochstrasser</b>		

## Jim O'Rourke's WG1L 40-METER CW BASE STATION

**Jim O'Rourke WG1L** set up a 40-Meter CW Base Station in his camper using his Icom IC-725 transceiver at 50 watts and his Outbacker vertical antenna. **Jim WG1L** is helping to promote Morse code as a fun mode of operation.



Jim O'Rourke WG1L

**Jim WG1L** reports that "the best thing about Field Day was working with the other members of the Whitman Amateur Radio Club for a common cause".

**Jim WG1L** is seen showing **Ray Bolduc KB1ODU** his quick mounting setup for his Outbacker antenna. After a bad coax cable was replaced, **Jim WG1L** made contacts as far west as Michigan and as far south as Florida.



Jim O'Rourke WG1L  
& Ray Bolduc KB1ODU  
outside Jim's WG1L camper

---

## Bill Tracy's N1SON & Jeff Tracy's N1SOM 40-METER BASE STATION



Jeff Tracy N1SOM



Bill Tracy N1SON

**Jeff Tracy N1SOM** and **Bill Tracy N1SON** set up a 40-Meter Base Station using their ICOM IC-706 Mark IIG and a 40 meter club dipole strung between the trees. The 40-Meter Base Station made 79 phone contacts with HAMS as far north as Ontario, Canada and as far south as Alabama and as far west as Michigan – all within a 1500 mile radius.

**Jeff N1SOM** volunteered to make up the Field Day log books, one for each mode and band of operation and then volunteered to fill out the paperwork and turn in the dupe sheets to the ARRL at the end of the exercise. **Jeff N1SOM** also volunteered to bring the soda and water in a cooler for all the members to enjoy.

**THE FOOD WAS DELICIOUS AND THERE WAS PLENTY OF IT**



**Don Keene KA1PJX & Paul Moss KB1MTW**

**The hot dogs and beans were just a warm up to the main course**

As you can see **Paul's N1VTI** grill was put to good use and the food was plentiful and delicious.

Look who got caught with his hand in the cookie jar. Needless to say – I helped to make sure that the cookies and brownies were gone by the end of Field Day.

A special thanks to **Roy Logan KB1CYV**, **Don Keene KA1PJX**, **Jeff Tracy N1SOM**, **Alice Carlson KB1OAU** and all the others who brought goodies.



**Roy Logan KB1CYV**  
**Ed Meehan N1NTZ**

Also a special thanks to **Paul N1VTI** for inviting the Whitman Club members to his home for a very relaxed and enjoyable Field Day. **Paul's N1VTI** patio made it to easy to sit and socialize and nibble on goodies while waiting for a turn to operate.

Two members took up **Paul's N1VTI** offered to sleep indoors instead of catching a few winks in their car or van. The Field day crew shut down about 11:30 p.m. and started up again at 6 a.m. Staying overnight were **Paul Burbine N1VTI**, **Sam Webber N1WIG**, **Jim Ford NM1F**, **Pete Carlson N1POO**, **Jeff Tracy N1SOM**, **Jim O'Rourke WG1L** and **Bill Tracy N1SON**.

## Sam Webber's N1WIG 10-METER BASE STATION

**Sam Webber N1WIG** set up a 10-Meter Base Station in a club screen tent using his Kenwood 850 transceiver and his portable Cushcraft R-5 antenna. **Sam N1WIG** used his truck wheel to support the portable antenna / mast stand. The SWR tested OK.



Sam Webber N1WIG



Raising the Cushcraft R-5 vertical antenna



Sam N1WIG & Ed N1NTZ  
checking out the rig

**Sam N1WIG** stayed up late into the night and made contacts as far south as Florida and as far north as the Maritime Provinces in Canada.



**Murphy's Law:** **Sam's N1WIG** Kenwood 850 transceiver would only tune up on 20-Meters. **The Bruce's N11X** backup Icom 706 Mark IIG would not transmit at all. Finally **Paul's N1VTI** backup Kenwood FT-857 was placed in service as the 10-Meter Base Station.

## Paul Burbine's N1VTI 20-METER BASE STATION

**Paul Burbine N1VTI** used his home station, a YAESU FT-990 transceiver, as the 20-Meter Base Station and connected it to his Cushcraft R-7 vertical antenna. **Jeff Lehmann N1ZZN** is seen logging in a contact using **Paul's N1VTI - WR9R** Field Day logging program. Contacts were made on 20-Meters as far south as Florida and as far west as Colorado.

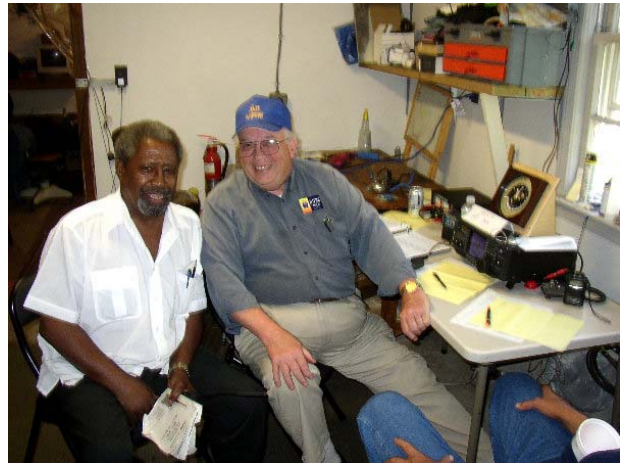
**The Bruce N11X** made a 20-Meter contact with former Whitman Club member **Mike Marinucci N1FRV** who was operating under the call sign **W4IIR** from the Sky High Amateur Radio Club Field Day Site in Florida.



Jeff Lehmann N1ZZN

## Bill Hayden's N1FRE 80-METER BASE STATION

**Bill Hayden N1FRE** set up his Icom IC-756 as an 80-Meter Base Station using a club all-band dipole antenna strung between the trees in a north - south direction. The 80-Meter Base Station made the most contacts. Contacts were made as far south as South Carolina, as far west as Michigan and as far north as Ontario, Canada - most within a 500-mile radius.



**Bill N1FRE** is seen talking with new member and new HAM **Sam Vernon KB1OEJ** of Roslindale who brought his Yaesu VX-7R handheld transceiver to seek help in programming the local repeaters. **Sam KB1OEJ** was soon heard logging in with **WA1NPO** via the Whitman REPEATER.

Sam Vernon KB1OEJ  
Bill Hayden N1FRE



Bruce Hayden N11X



Jim Ford NM1F



Pete Carlson N1POO

**Bruce N11X**, **Jim NM1F** and **Pete N1POO** are seen taking a turn at the 80-Meter Base Station. **Bruce N11X** talked to local HAM **Jim Dillon KA1AMR** operating as 1D from Scituate and **W1AW** operating as 4F in Connecticut. **Jeff N1ZZN** made contact with **Bill N1FRE** mobile in Whitman. **Jeff N1ZZN** made the most contacts this Field Day with 110 contacts in one stretch on 80-Meters alone – it was a pile up.

### RADIOACTIVE REPORTS FROM THE FIELD

**Steve Rudin W1WSN** reported in from Florida that they let him install an antenna on the roof of his condo and he operated a number of hours as class 1D and worked 49 Sections and 36 States but never heard **WA1NPO**.

**Phil McNamara N1XTB** and **Gil Follett W1GMF** participated with the Massasoit Club Field day activities, operating out of the Bridgewater Emergency Operations Center. **Al Drollett Jr. W1SM** reported that he also checked out the Massasoit Club Field Day Site. **Neal Harrington KB1LXL** reported that he accepted an invitation to participate in the Attleboro Club's Field Day activities.

**Jim Gilbert W5IRW** reported in from Plymouth, MA. that he heard other stations calling **WA1NPO** but could not hear the Whitman Club station operator while using his Outbacker antenna and his Icom 756 transceiver so he called in on his 2-Meter handheld.

**Ken Kavaljian KB1KVL** reported that he set up his rig and operated from the Genesis Club Field Day Site at the Plymouth Airport. **Ray Bolduc KB1ODU** reported that he visited the Braintree EMA Field Day Site at Sunset Lake in Braintree and operated on 80-Meters.

## Roy Logan's KB1CYV 15-METER BASE STATION

**Roy Logan KB1CYV** set up his Icom IC-735 transceiver as the 15-Meter Base Station in one of the club's screen tents and used **Paul's N1VTI** 15-Meter beam antenna. **Roy KB1CYV** also set up his Alinco DR-605 transceiver as a 2-Meter Club Station to monitor the Whitman REPEATER for checkins.



**Frank Hayes N1OGP**  
**at the 15-Meter Base Station**



**Roy Logan KB1CYV**

The 15-Meter band finally opened up south to Florida on Sunday morning and I helped **John Chase KB1ODS** make his first HF contact from the 15-Meter Base Station. Other 15-Meter contacts were logged by **Roy KB1CYV**, **Paul KB1MTW**, **Jeff N1ZZN**, **Jim NM1F**, **Bob K1VU**, **Frank N1OGP** and **The Bruce N1IX**.

---

## WHITMAN AMATEUR RADIO PUBLIC SERVICE NET (WARPSN)

The **WARPSN Net** meets every Sunday morning at 8:30 a.m. on the Whitman REPEATER 147.225 MHz PL 67. Come join in and share your amateur radio related activities with the other area HAMS and short-wave listeners as well.

As part of our training, we encourage everyone to practice sending routine RADIOGRAM messages. In June we had 4 sessions with an average of 12 area HAMS checking in each week and 9 messages were sent.

**Sam Webber N1WIG** was Net Control for the Sunday morning June 24<sup>th</sup> **WARPSN** Net and operated from the Field Day Site Club Station.

Whitman Club members who were not able to make it to the Field Day Site but who were able to log in with **WA1NPO** over the two day event via 2-Meters were **Priscilla Imhoff KB1BTS**, **George Davis KC1FZ**, **Carl Davis KB1OYH** and **Jim Gilbert W5IRW**.

Area Hams who checked in with the club Station **WA1NPO** were **Kevin O'Donnell K1KOD** of Duxbury and **Greg Glynn W1VBF** of Taunton.



**Sam Webber N1WIG**  
**a new WARPSN Net Control**  
**volunteer – thanks Sam N1WIG**

## MORE FIELD DAY PICTURES



**Paul Burbine N1VTI**

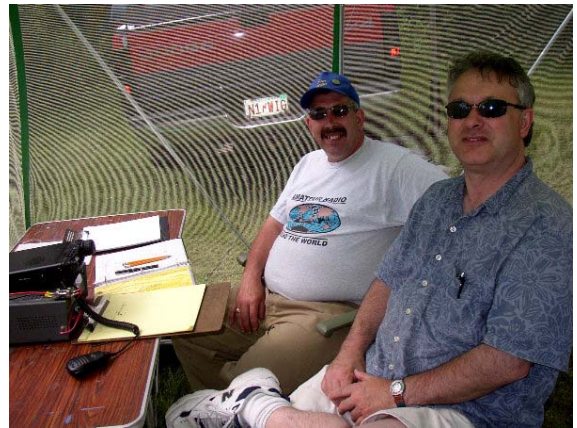
**Paul N1VTI** tried his Spud Gun to launch an antenna string but it malfunctioned. **Paul's N1VTI** loop antenna would not tune on 80-Meters and had to be replaced. The sling shot saved the day.



**Bill Anstead KB1NPH**  
**Ron Smith N1PXX**

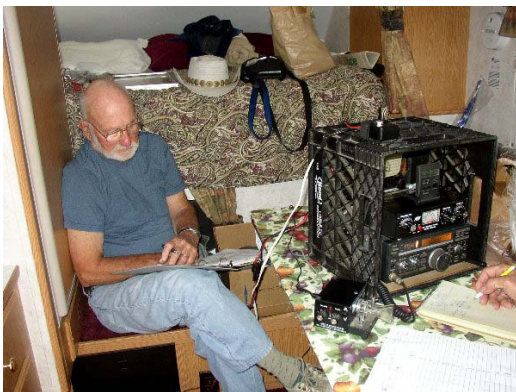


**Ray Bolduc KB1ODU**



**Sam Webber N1WIG**  
**Ross Hochstrasser KB1OEO**

**Ray Bolduc KB1ODU** is seen at the Field Day Site, working on a program that will interface Echolink with the Whitman REPEATER from his home QTH. **Ray KB1ODU** also hopes to have a portable version of Echolink working smoothly by Marshfield Fair.



**Don Keene KA1PJX**

**Don Keene KA1PJX** was found reading up on the Field Day rules in **Jim's WG1L** camper while listening to the sounds of Morse code in the background.



**Paul Moss KB1MTW**

**Paul Moss KB1MTW** is seen making up some coax cable connectors at the Field Day Site.

Finally – **Bill N1FRE** submitted a press release to the newspapers and **Al Drollett's W1SM** name was inadvertently left off the list of participants.



## Amateur Radio Club in emergency preparedness exercise

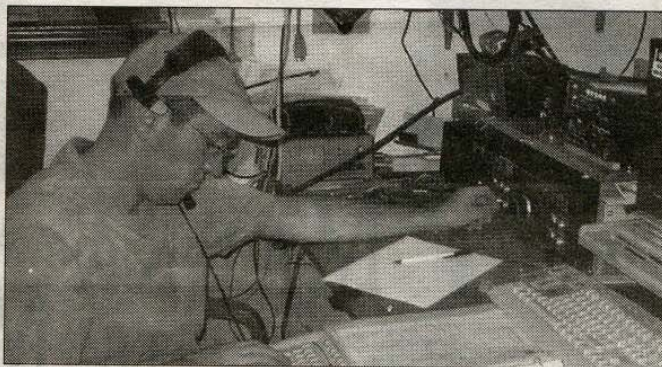
The Whitman Amateur Radio Club participated in a National and North American emergency preparedness exercise, called Field Day 2007, over the weekend of June 23rd and 24th. A total of 25 area amateur radio operators (HAMS) mobilized last Saturday in East Bridgewater at the Home of Paul Burbine N1VTI – President of the Whitman Amateur Radio Club, to set up portable antennas, radios, generators and tents in his back yard.

The object of the exercise is to see how many other amateur radio stations can be contacted in a given 24 hour period that started at 2 p.m. on Saturday afternoon and ended at 2 p.m. on Sunday afternoon. Paul N1VTI reports that the exercise was a great success as the team was able to set up six independent base stations and made a total of 411 contacts with amateur radio operators in 29 states and there Canadian provinces over the 24-hour period.

Whitman Club members are active on a regular basis in the Skywarn program reporting severe weather conditions from their home or vehicles directly to the National Weather Service in Taunton via amateur radio. The Skywarn program has about 5000 trained spotters throughout New England, of which 1/3 are HAMS. Over the years, the Whitman Amateur Radio Club members have become more and more involved in emergency communication training and volunteer service with the Emergency Management Agencies in their local city and towns. Amateur radio is truly a fascinating hobby and a national resource that also has been integrated into the Massachusetts Emergency



**FIELD DAY 2007:** Members of the Whitman Amateur Radio Club participated in Field Day 2007, a National and North American emergency preparedness exercise. The local amateur radio operators mobilized in East Bridgewater at the home of Paul Burbine.



**Jeff Lehmann N1ZZN of Hanson participates in Field Day 2007 as a member of the Whitman Amateur Radio Club, Inc.**

Management Agency Burbine N1VTI of E. Bridgewater, Roy Logan KB1CYV, Pete Carlson N1POO and Alice Carlson KB1OAU of Bridgewater, Jeff Lehmann N1ZZN of Hanson, Don Keene KA1PJX and Jim O'Rourke WG1L of N. Weymouth, John Chase KB1ODS of Pembroke, Jim Ford NM1F of Plymouth, Bruce Hayden N1IX of Raynham, Sam Vernon KB1OEJ of Roslindale, Bill Anstead KB1NPH of Rockland, Paul Moss KB1MTW, Ross Hochstrasser KB1OEO, Bill Hayden N1FRE, Mike Supple KB1OEP and Frank Hayes N1OGP of Whitman, Bob Johnson K1VU of W. Bridgewater.

The 25 licensed amateur radio operators participating this year were Ed Meehan N1NTZ of Brockton, Ron Smith N1PXX of Bryantville, Ray Bolduc KB1ODU, Jeff Tracy N1SOM, Bill Tracy N1SON, Bill O'Hara WA1NYC and Dave Gurney WA1YZH of Abington, Paul



# WHITMAN AMATEUR RADIO CLUB, INC.

A Non-Profit Corporation Serving the Public in Time of Emergency



Post Office Box 48  
Pine Street  
Whitman, MA 02382

Telephone: (781) 447-1655  
ARRL Club #0082  
Club Call Sign: WAINPO

## MEETING SCHEDULE

Meetings are held on the first  
Wednesday of each month

The next meeting will be held at the  
Whitman Public Library, which is  
located at 100 Webster Street  
in Whitman, Mass.

### Next Meeting

Wednesday, July 11<sup>th</sup> at 6:30 p.m.  
Whitman Public Library

## CLUB OFFICERS

President	Paul	N1VTI
V. President	Ron	N1PXX
Secretary	Jeff	N1ZZN
Treasurer	Jeff	N1SOM
Director	Mike	KB1OEP
Director	Ken	KB1KVL
Director	Paul	KB1MTW
Director	Bruce	NI1X

---

Editor	Bruce	NI1X
E-mail articles to:	<a href="mailto:ni1x@arrl.net">ni1x@arrl.net</a>	

---

Web Master	Jeff	N1ZZN
------------	------	-------

Web Site: <http://www.wa1np.org>

---

Club Repeater Station:	147.225 MHz (CTSS 67 Hz)	449.875 MHz (CTSS 88.5 Hz)
------------------------	--------------------------	----------------------------

*Whitman Amateur Radio Club, Inc.  
P.O. Box 48  
Whitman, Ma 02382*

