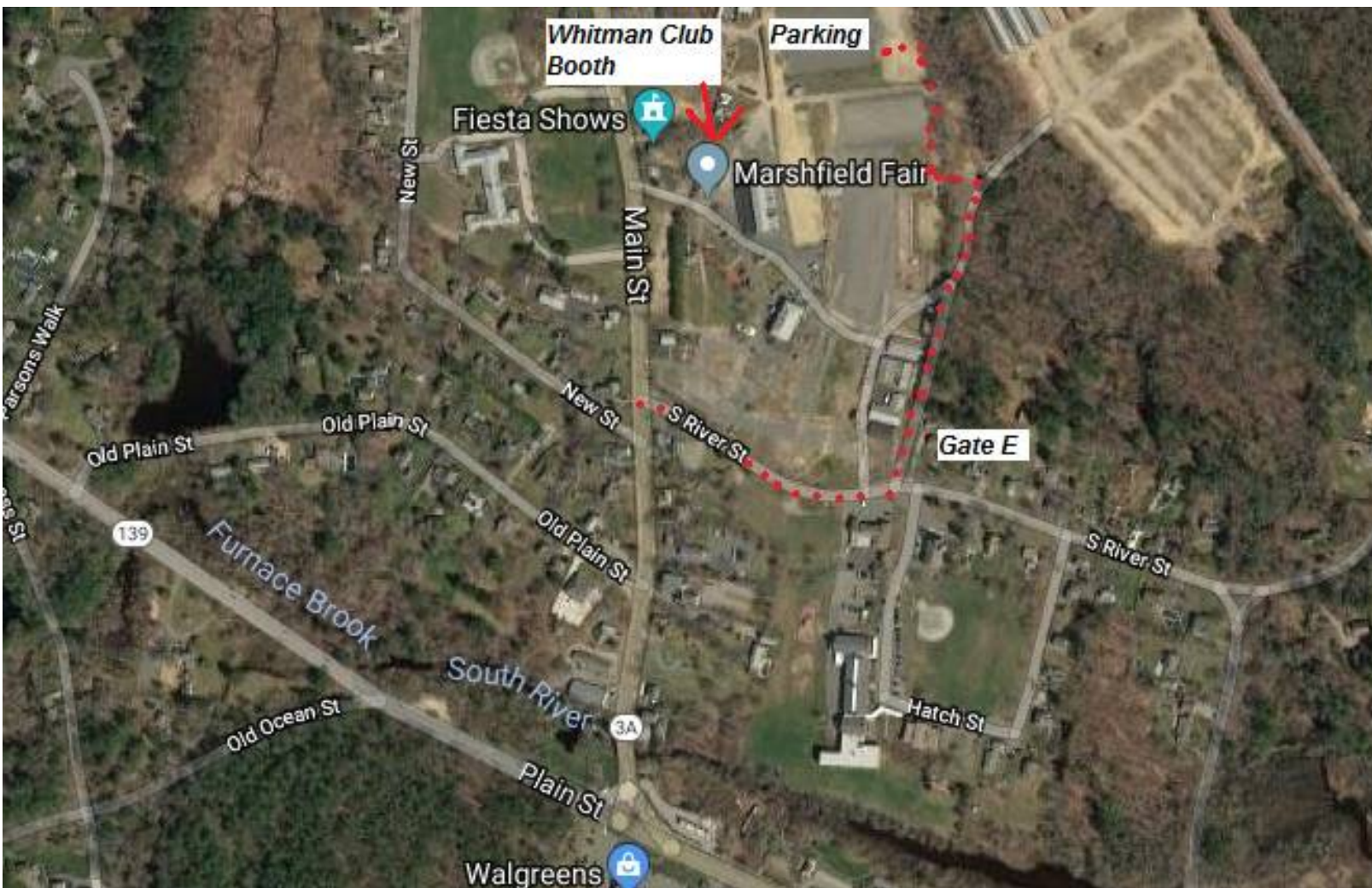


## Instructions for Marshfield Fair entrance and parking

- Enter thru the **S. River Street Gate E** (off of Main St., Rt. 3A),
- Turn **LEFT** going through Gate E which is opposite the Marshfield Central fire station.
- Continue straight and stop at a guard shack. Provide the top half of your ticket to the security/ticket person.
- Continue past the guard shack and at a break in the concrete barriers turn **LEFT** (There will be parking folks directing traffic there. Tell the Fair personel you are working at the ham radio display booth. ("Bridget Burns" is our sponsor btw).
- Follow the road up an incline, turn **RIGHT** and continue into a large field parking lot near the race track and Grand Stand. A few handi-cap spots will be down front.
- From there our club booth is beyond the race track and Grand Stand towards Main street and N.E. of gate A. We have a white wooden 10X10 building and our club canopy will be set up in front. We're between the 'Birds of Prey' and the Blacksmith building.
- Here's a few Google map images showing the overall Fair area (Rt 139 and Rt 3A) with the entrance route highlighted and a few street view pictures for familiarity.







Driving down S River St from Main St (Rt3A) adjacent to the Fair. Note the Marshfield Fire Station on the right. Opposite will be the **GATE E** entrance. Turn **LEFT** into the Fair here.



A view looking into the **GATE E** entrance. Follow in and stop at the guard shack where they will take the top portion of your entrance ticket (the parking pass portion). Continue past the guard shack and look for a **LEFT** turn up a short hill and then a **RIGHT** to access the parking lot area (typically parking folks will be directing traffic at this intersection).